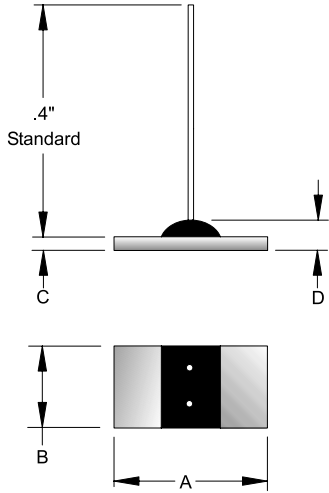
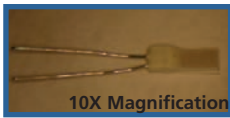


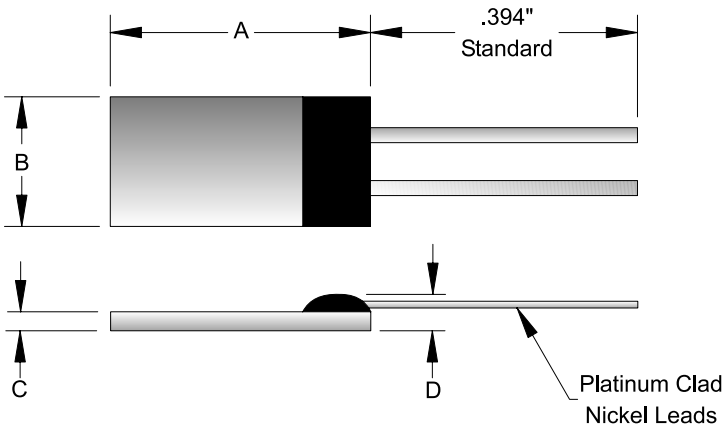
Thin Film RTD Elements (Leads Included) Class 650



Vertical Configuration



650		Thin Film Element			
Code	Element Configuration				
P2A	Platinum, 100 Ohm \pm .06% at 0°C, .00385 Ohm/Ohm/°C Temperature Coefficient				
P2B	Platinum, 100 Ohm \pm .12% at 0°C, .00385 Ohm/Ohm/°C Temperature Coefficient				
P2C	Platinum, 100 Ohm \pm .5% at 0°C, .00385 Ohm/Ohm/°C Temperature Coefficient				
P5A	Platinum, 500 Ohm \pm .06% at 0°C, .00385 Ohm/Ohm/°C Temperature Coefficient				
P5B	Platinum, 500 Ohm \pm .12% at 0°C, .00385 Ohm/Ohm/°C Temperature Coefficient				
P5C	Platinum, 500 Ohm \pm .5% at 0°C, .00385 Ohm/Ohm/°C Temperature Coefficient				
P6A	Platinum, 1000 Ohm \pm .06% at 0°C, .00385 Ohm/Ohm/°C Temperature Coefficient				
P6B	Platinum, 1000 Ohm \pm .12% at 0°C, .00385 Ohm/Ohm/°C Temperature Coefficient				
P6C	Platinum, 1000 Ohm \pm .5% at 0°C, .00385 Ohm/Ohm/°C Temperature Coefficient				
		Element Dimensions Standard Configurations			
Code	"A"	"B"	"C"	"D"	
1	.063"	.047"	.010"	.031"	
2	.091"	.079"	.026"	.051"	
3	.197"	.063"	.026"	.051"	
4	.197"	.079"	.026"	.051"	
5	.394"	.075"	.026"	.051"	
		Vertical Configurations			
	6	.091"	.079"	.026"	.051"
		Extended Lead Options			
	Code	04 0.4" Standard Lead Length Consult factory for other length options			
650		Enter Desired Part Number Here			
650	P2B	4	04	Example Part Number Here	



Standard Configuration

Consult Factory for Optional:

- Lead Lengths
- Lead Insulation
- Lead Extension size (gage)